

**EATON**

**Powerware**

**Intelligent Power Control™ IPC3400 Series**



**Enclosure Power Distribution Units (ePDU™)**



IPC3400-A1-NET Rear



**TABLE TOP**

- Height 3.43" x Depth 7.5" x Width 5.63"
- Approximate shipping weight is 6 lbs.

**OUTLETS**

- IPC3400-A1 has 4 NEMA outlets
- IPC3400-AB has 4 IEC outlets

**(6) INDICATOR LIGHTS**

- (1) Main power
- (1) Data light
- (4) Power on to outlets 1-4

**COMMUNICATIONS**

- RS232, Serial: 9600 baud only
- Optional ethernet control via RJ45 connector (add -NET to part number)
- Data terminal emulation software is required to communicate with the IPC internal command codes such a Telnet or Hyperterminal

**MODEM ACCESS**

- External Modem must be put in auto-answer mode prior to making contact with the IPC

**EMI/RFI FILTERING**

- Common Mode - Line to Ground
- Differential Mode - Line to Line

**SPIKE/SURGE SUPPRESSION**

- L-N, L-G, N-G

**POWER INPUT**

- IEC C14 power inlet
- Power cable included:
  - AB version has 8' C13 to C14
  - A1 version has 9' C13 to 5-15P



**OUTLET STATUS**

- Query the IPC for Outlet and Watchdog status, i.e. outlets are "on" or "off"

**MULTIPLE TIME DELAY™ (MTD™)**

- Turn outlets "on" or "off" at one time
- Sequence power up and power down to outlets 1 - 4 with a four second time delay (factory set)
- Set power "on" sequence to any combination of outlets
- Set the MTD™ timing from 1 second to 999 seconds, i.e. 009 = 9 seconds

**PASSWORD PROTECTION**

- For added security, a password feature is included which allows the user to assign a three alphanumeric character password

**ADDRESSING**

- The IPC comes with a default address but you can also create your own with any four alphanumeric characters

**WATCH-DOG/AUTO-REBOOT**

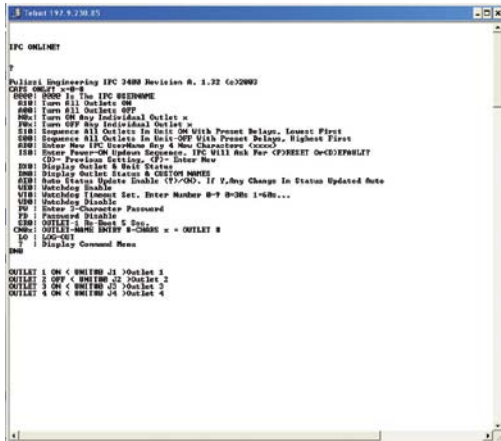
- The IPC will monitor the control connection and automatically reboot itself if the connection locks up. The auto-reboot is activated by the time-out period running down to zero. When this occurs the IPC will shut down all outlets for four seconds and restart in the default or user defined sequence
- Set the Time Out Period to any number 0-9 where each digit represents 30 seconds, i.e. 3 = 120 seconds (user defined)

**COMMANDS AVAILABLE**

- All outlets on/off
- Individual outlet on/off
- Set up and Sequence on/off all outlets
- Create password and unit address
- Name outlets with 8 character name
- Set up, enable or disable Watchdog
- Display outlet and Watchdog Timer status

SPECIFICATIONS	IPC3400-A1	IPC3400-A1-NET	IPC3400-AB	IPC3400-AB-NET
Approvals	NA	NA	NA	NA
Voltage Input/Output (50/60Hz)	120V~	120V~	100-240V~	100-240V~
Current Input	15A	15A	15A	15A
Current Output	12A	12A	12A	12A
Full Load VA	1440VA	1440VA	1440VA/2880VA	1440VA/2880VA
NEMA Outlets (rear panel)	5-15R	5-15R	IEC 60320 Type C13	IEC 60320 Type C13
EMI/RFI Filter	15A	15A	15A	15A
Surge Suppression	270V	270V	270V	270V
Power Cord/Length (rear panel)	14/3, 9'	14/3, 9'	14/3, 8'	14/3, 8'
Power Input Plug	5-15P	5-15P	IEC 60320 Type C14	IEC 60320 Type C14
Serial Control (RS232)	YES	YES	YES	YES
Ethernet Control	NO	YES	NO	YES

Screen Captures From Interface:



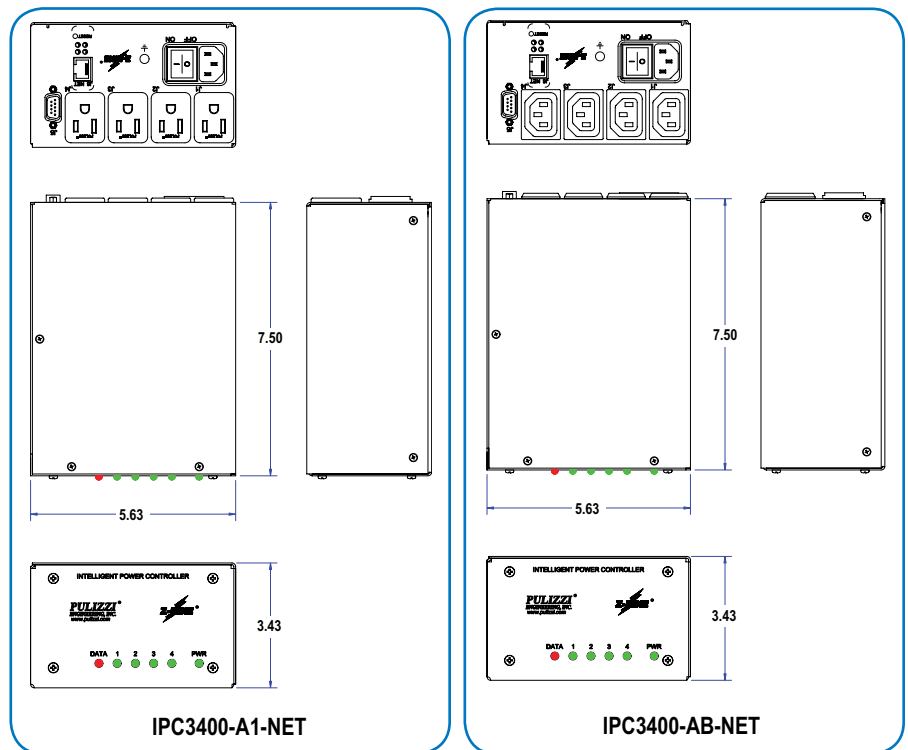
TVSS (Transient Voltage Surge Suppression) MOV SPECIFICATIONS	
Continuous AC Voltage	270VAC
Continuous DC Voltage	360VDC
Max. DC Leakage	200µA
Low Varistor Voltage Limit	389VDC
High Varistor Voltage Limit	453VDC
Nominal Varistor Voltage	424VDC
Current For Varistor Voltage	1mA
Max. Clamp Voltage 8x20µs	680V
Max. Clamp Voltage Test Current	100A
Peak Current Rating (1 Pulse)	10000A
Peak Current Rating (2 Pulse)	6500A
Energy Rating (10x1000µs)	325J
Energy Rating (8x20µs)	325J
Capacitance	970pF
Impulse Response Time	50ns

EMI/RFI FILTERING COMMON MODE INSERTION LOSS				
Mhz.	.2	1.0	2.0	10.0
dB.	15	25	45	50

DIFFERENTIAL INSERTION LOSS				
Mhz.	.2	1.0	2.0	10.0
dB.	10	22	32	50

Environmental

Operating Temperature is 0 to 50 C  
 Storage Temperature is -40 to 70 C  
 Altitude Maximum 10,000 ft.  
 Relative Humidity is 95% Max  
 Non-Condensing



Drawings are not shown to scale  
 Dimensions are in inches