



# Eaton Two Post Racks and cable management

For network and premise wiring

Eaton® extends its enclosure and airflow management product portfolio with Two Post Rack products that meet a variety of application requirements for network closets, server rooms and data centers. Cable management is one of the critical functions of Two Post Racks, and the vertical and horizontal management systems offered for the Two Post Rack provide flexibility and robust performance.

Two Post Racks and associated cable management accessories provide the primary mounting and cabling infrastructure in a wide range of premise wiring applications and data center communication centers.

For applications in seismically active regions or where anchorage is required, Eaton offers the three- and six-inch upright racks which have OPA approvals (California). The Two Post Seismic Rack has been tested to NEBS GR-63-Core up to a weight load of 900 pounds.

## Value Proposition

Maintain your critical applications with the first part of Eaton's Power Solution.

- Available in three configurations to meet a variety of application requirements: three-inch upright, six-inch upright and Seismic Rack
- Three- and six-inch configurations feature a robust extruded aluminum design, which is shipped unassembled for cost effective logistics
- Simple, durable design holds up to repeated relocation
- Full range of accessories simplify cable management
- Flat black powder coat finish complements any data center



*Powering Business Worldwide*

## Two Post Racks for network and premise wiring applications



**Two Post Rack (shown with three-inch uprights) assembles in approximately 10 minutes with standard hand tools.**

## Two Post Seismic Rack for applications in seismically active regions



**Two Post Seismic Rack is tested to GR-63-Core shock and vibration to a load of 900 lb.**

### Features

	Two Post Rack	Two Post Seismic Rack
Three- and six-inch vertical upright configurations	•	
Knockdown version for ease of shipping	•	
Rack assembles in approximately 10 minutes with standard hand tools	•	
Aluminum construction with double top angles for superior rigidity	•	
Reinforced dual uprights for rigidity		•
Welded steel construction		•
Equipment mounting rails are adjustable from three to eight inches		•
Open top/bottom to maximize cabling options		•
Four holes provided for anchoring		•
84 inches high, 45U for mounting, 19 inches wide	•	•
#12-24 tapped panel mounting holes eliminate the need for cage nuts and simplify assembly	•	•
Conforms to EIA-ECA-310-E	•	•
Rack kit includes 30 dog-point combo head mounting screws (Phillips and flat head)	•	•
Finish: flat black (standard). Special order: Telco Gray (other colors upon request)	•	•
All U spaces are numbered	•	•
UL Listing as communications circuit accessory (UL E171936)	•	•
Approvals	Three-inch OPA number: OPA-2426-07 Six-inch OPA number: OPS-2427-07	OPA-2430-07; NEBS GR-63-Core Seismic Zone 4 – 900 lb.; Tested per ICBO AC 156 standard – up to 900 lb.
Load rating	1200 lb. static load	Up to 900 lb.
Anchoring	Anchor kit SB588A	Wedge anchors AWA62350

# Cable management

## Single- and double-sided cable managers

Single- and double-sided cable managers feature closely spaced fingers to manage high density cabling both on a Two Post Rack and between racks. Providing cable management at every U height in the rack, managers have one-piece full length doors which allow for quick opening from either side and snap gates retain cabling when the doors open.

Cable manager include	Single-sided	Double-sided
Vertical cabling section	1	2
Door	1	2
Retention gates	3	6
Push in fasteners	25	50
Cable strap mounts	6	12
Cable retainer bars	2	4
Mounting hardware	1 set	1 set

## Finger brackets

Four-inch finger brackets install directly onto the Two Post Rack frame to help manage cabling. Fingers align with U designations.

## Cable trays

Robust transition trays provide adjustable horizontal cable management for patch cords and jumpers. Aluminum construction features rounded waterfall edges.

## Horizontal rackmount cable managers

Horizontal cable managers with snap-on removable door are available in 1U, 2U and 3U sizes.

## Vertical cable managers

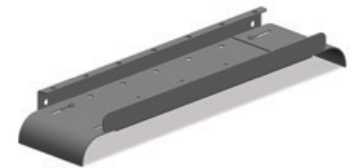
Vertical cable managers provide cable management between racks. Available as single- or double-sided, hinging removable gates offer quick and easy installation.



Single- and double-sided cable managers



Finger brackets



Cable trays



Fixed ePDU rack support bracket



Adjustable ePDU rack support bracket



Horizontal rackmount cable manager

# Accessories

## Fixed and adjustable ePDU® rack support brackets

Mount up to three ePDU to standard rack upright.

## Double shelf

Double shelf supports up to 200 lb. load capacity, perfect for large devices such as monitors or laptops. Requires 4U of mounting space.

## Single solid shelf

Single shelf supports up to 100 lb. load capacity, ideal for monitor or laptop storage. Requires 3U of mounting space.

## Single vented shelf

Single vented shelf supports up to 100 lb. load capacity, ideal for monitor or laptop storage. Requires 3U of mounting space.

## Two Post Racks and Options model selection guide

### Two Post Racks

Catalog number	Description	Height (in. / mm)	Width (in. / mm)	Mounting width (in. / mm)	Inside width (in. / mm)	Base anchor spacing (in. / mm)	Weight (lb.)
SB556084XUFB	Two Post Rack with three-inch uprights (unassembled)	84 / 2133	20.3 / 516	18.3 / 465	17.8 / 451	16 / 406	30
SB55608419U6FB	Two Post Rack with six-inch uprights (unassembled)	84 / 2133	20.3 / 516	18.8 / 465	17.8 / 451	16 / 406	30
SB588A	Anchor kit (four anchors and hardware)						

### Two Post Seismic Rack

Catalog number	Description	Height (in. / mm)	Width (in. / mm)	Mounting width (in. / mm)	Weight (lb.)
SB85219084FB	Two Post Seismic Relay Rack	84 / 2133	20.3 / 516	18.3 / 465	30
AWA62350	Wedge anchor (minimum order quantity: 25)				

### Cable management

Catalog number	Description	Fits rack (in. / mm)	Height (in. / mm)	Width (in. / mm)	Weight (lb.)
SB86083S084FB	Single-sided cable manager for Two Post Rack	84 / 2133	80.38 / 2042	3.13 / 80	24.2
SB86083D084FB	Double-sided cable manager for Two Post Rack	84 / 2133	80.38 / 2042	3.13 / 80	45.3
SB860FSFB	Cable manager finger bracket		11U	4	0.9
SB860FSKFB	Replacement finger section, 11U, includes hardware				0.6

### Cable trays

Catalog number	Description	Height (in. / mm)	Width (in. / mm)	Weight (lb.)
SB81319TT6FB	Top transition tray, 1 1/2 inch high	6 / 152	19 / 483	4
SB81319UT6FB	Upper transition tray	6 / 152	19 / 483	4

### Horizontal rackmount cable managers

Catalog number	Description	Height (in. / mm)	Width (in. / mm)	Weight (lb.)
SB87019S1FB	1U horizontal cable manager	19 / 483	1U	2.1
SB87019S2FB	2U horizontal cable manager	19 / 483	2U	2.5
SB87019S3FB	3U horizontal cable manager	19 / 483	3U	2.8

### Vertical cable managers

Catalog number	Description	Fits rack (in. / mm)	Height (in. / mm)	Width (in. / mm)	Weight (lb.)
SB57163S084FB	Single-sided 84-inch cabling section	84 / 2133	64 / 1626	3.6 / 91	8
SB57163D084FB	Double-sided 84-inch cabling section	84 / 2133	12.8 / 325	3.6 / 91	24
SB571GROMMETKIT	Grommet kit				
SB571BUSHINGKIT	Bushing kit				

### Accessories

Catalog number	Description	Height (rack U)	Depth (in. / mm)	Weight (lb.)
<b>ePDU brackets</b>				
SB3010	Fixed ePDU support bracket	4.82	1.75	1
SB3011	Adjustable ePDU support bracket	3.5	1.13	1
<b>Double shelf</b>				
SB596S19103SFB	Steel double-sided shelf for three-inch uprights	4	20	14
SB596S19106SFB	Steel double-sided shelf for six-inch uprights	4	20	14
<b>Single solid shelf</b>				
SB747S1915SFB	Steel, 15-inch deep single vented shelf	3	15	11
<b>Single vented shelf</b>				
SB747V1915SFB	Steel, 15-inch deep, single vented shelf	3	15	9.2

To learn more about Eaton Two Post Racks, please visit:  
[Eaton.com/enclosures](http://Eaton.com/enclosures)

**Eaton**  
 Electrical Sector  
 1000 Eaton Boulevard  
 Cleveland, OH 44122 USA  
 Eaton.com

© 2014 Eaton  
 All Rights Reserved  
 Printed in USA  
 BR159003EN  
 February 2014

Eaton and ePDU are registered trademarks of Eaton.

All other trademarks are property of their respective owners.