

Document Number: 130211JL-1	Originator: Jon Landau	Date: May 6 th , 2021
-----------------------------	------------------------	----------------------------------

Data Sheet
MIL-PWR-VIC-28-2000



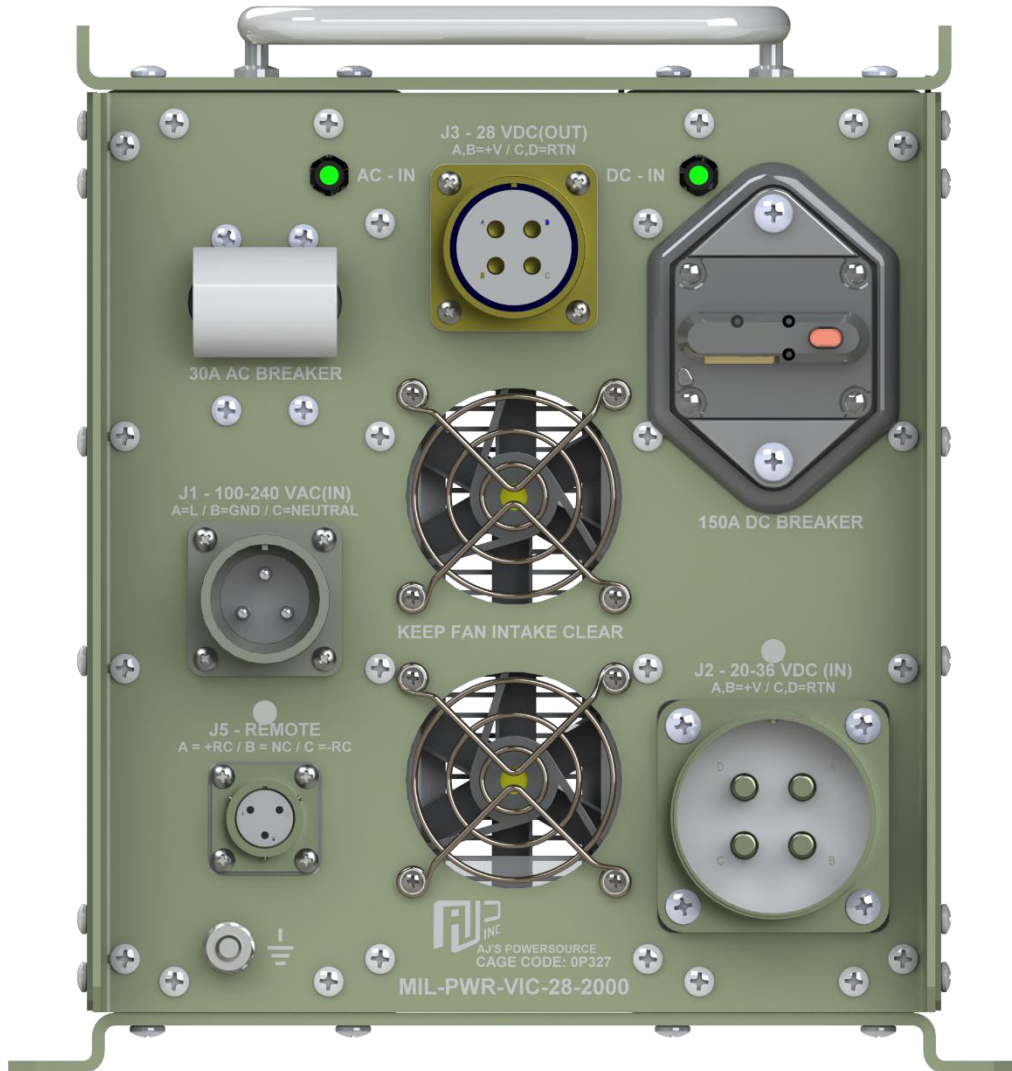
Document Number: 130211JL-1	Originator: / Sign:	Approved By: / Sign:
-----------------------------	---------------------	----------------------

Warning: This document may contain technical data whose export is restricted by the Arms Export Control Act (Title 22, U.S.C. Sec 2751, et seq.) or the Export Administration Act of 1979, as amended (Title 50, U.S.C., app. 2401 et seq.) Violators of these export laws are subject to severe criminal penalties.
 Proprietary Data: The data disclosed in this document was originated in whole or in part by AJPS Inc. and is to be utilized only for the specific purposes for which it was supplied. It is not to be disclosed, transmitted or reproduced without the prior written consent of AJPS Inc.

Creation Date: 07 May 2012	Reference ECO:	Document Number Rev Level:
----------------------------	----------------	----------------------------

SPECIFICATION	VALUE	UNITS
DC Output		
Rated Voltage	28	Volts DC
Rated Max. Current	72	Amps
Maximum Rated Power	2000	Watts
Ripple and Noise	280	mVolt pp
Load Regulation	60	mVolt pp
Line Regulation	60	mVolt pp
AC Input		
Voltage Range	100 - 264	Volts AC
Frequency Range	47 – 63,400Hz @ 115Vac only	Hertz
Nominal Current	11 @ 220V	Amps AC
Power Factor (typical)	>0.98	
Leakage Current	<3 @ 120VAC	mAmps AC
Efficiency (typical)	>85 (Input to Output)	%
DC Input (from storage batteries)		
Rating	20 - 36	Volts DC
Current	102, full load, 22Vdc input	Amps DC
Efficiency (typical)	>85	%
Front Panel Indicators		
AC Input Powered On	Green=Powered on, using AC input, Off=Not powered from AC input	
DC Input Powered On	Green=Powered on with External DC input	
Front Panel Control		
AC Input On/Off Circuit Breaker	UP (ON) powers on unit from AC input, DOWN (OFF) powers off unit from AC input	
DC Input On/Off Circuit Breaker	UP (ON) powers on unit from DC input, DOWN (OFF) powers off unit from DC input	
Front Connectors		
DC Output	1 x MS3102E22-22S, Pin A,B = +Vout, Pin C,D = -Vout	J3
AC Input	1 x MS3102E20-19P, Pin A=Line, Pin B=Ground, Pin C=Neutral	J1
DC Input	1 x MS3102E32-17P, Pin A, B = +Vin, Pin C,D = -Vin	J2
Remote On/Off	Dry Contact, normally open, remote switch closure disables power supply output	J5
Safety Ground Stud	¼ -20 Stud	

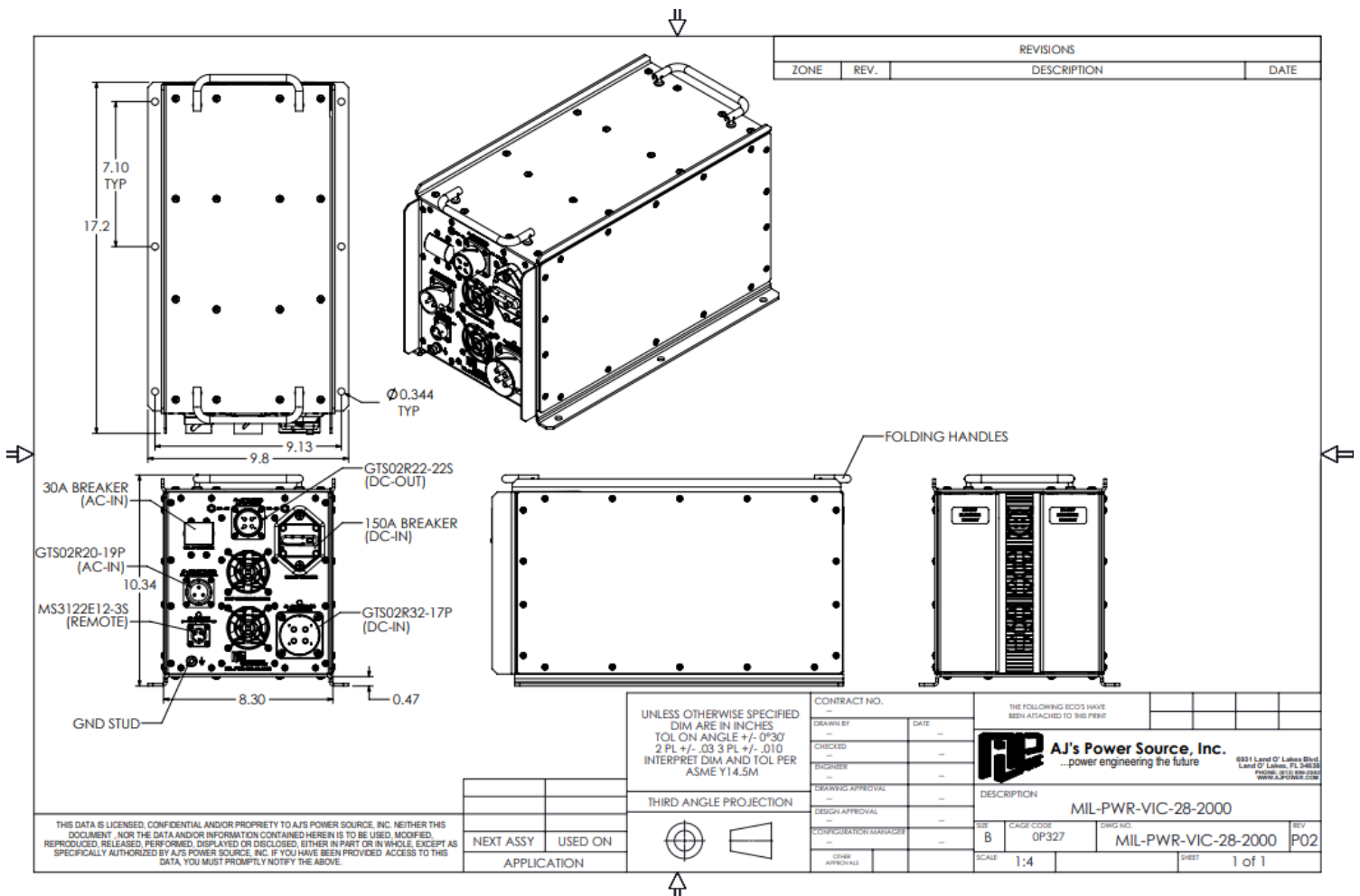
SPECIFICATION	VALUE	UNITS
Protection		
Over Current	Yes	
Over Voltage	Yes	
DC Input Reverse Polarity	Yes	
Isolation		
AC Input to DC Output	Yes, 1 minute AC input to DC output	3,000 Vac
DC Input to DC Output	Yes, 1 minute DC input to DC output	1,500 Vdc
Environmental		
Operating Temperature Range	-20 to +70*	°C
Storage Temperature Range	-40 to +85*	°C
Working Humidity	95 non-condensing*	%
Altitude	10,000 (Operating) / 40,000 (Non-Operating)*	feet
Fungus	MIL-STD-810G*, non fungus promoting materials used	
Sand and Dust	MIL-STD-810G*	
Vibration	MIL-STD-810G*	
Functional Shock	MIL-STD-810G*	
Ingress Protection	IP66*	
EMI/EMC		
	MIL-STD-461F*	
	CE102*	
	CS101*	
	CS114*	
	CS115*	
	CS116*	
	RE102*	
	RS103*	
	*Designed to meet, lab testing required for formal approval	
Physical Properties		
Dimensions	10.34H x 9.8W x 17.20L (see drawing below)	inch
Mounting	Bottom Mount	
Weight	~39	lbs.
Material	Aluminum	
Color/Finish	Olive Drab	



Front View
MIL-PWR-VIC-28-2000



Rear View
MIL-PWR-VIC-28-2000



**Mechanical Drawing
 MIL-PWR-VIC-28-2000**