

|                             |                        |                     |
|-----------------------------|------------------------|---------------------|
| Document Number: 130211JL-1 | Originator: Jon Landau | Date: May 6th, 2021 |
|-----------------------------|------------------------|---------------------|

|                     |
|---------------------|
| Data Sheet          |
| MIL-PWR-VIC-28-2500 |



|                             |                     |                      |
|-----------------------------|---------------------|----------------------|
| Document Number: 130211JL-1 | Originator: / Sign: | Approved By: / Sign: |
|-----------------------------|---------------------|----------------------|

Warning: This document may contain technical data whose export is restricted by the Arms Export Control Act (Title 22, U.S.C. Sec 2751, et seq.) or the Export Administration Act of 1979, as amended (Title 50, U.S.C., app. 2401 et seq.) Violators of these export laws are subject to sever criminal penalties.  
 Proprietary Data: The data disclosed in this document was originated in whole or in part by AJPS Inc. and is to be utilized only for the specific purposes for which it was supplied. It is not to be disclosed, transmitted or reproduced without the prior written consent of AJPS Inc.

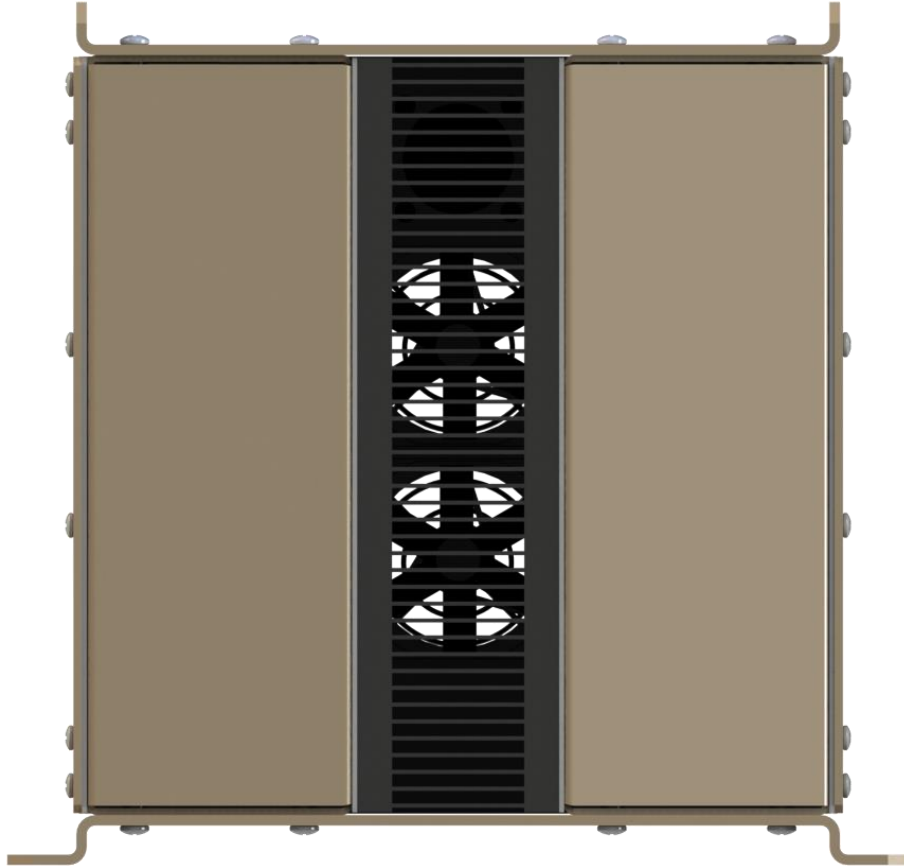
|                            |                |                            |
|----------------------------|----------------|----------------------------|
| Creation Date: 07 May 2012 | Reference ECO: | Document Number Rev Level: |
|----------------------------|----------------|----------------------------|

| SPECIFICATION                   | VALUE  | UNITS     |
|---------------------------------|--|-----------|
| <b>DC Output</b>                |  |           |
| Rated Voltage                   | 28   | Volts DC  |
| Rated Max. Current              | 90   | Amps      |
| Maximum Rated Power             | 2500   | Watts     |
| Ripple and Noise                | 80 on AC input / 200 on DC input   | mVolt pp  |
| Load Regulation                 | 60 on AC input / 190 on DC input   | mVolt rms |
| Line Regulation                 | 60 on AC input / 95 on DC input  | mVolt rms |
| <b>AC Input</b>                 |  |           |
| Voltage Range                   | 100 – 264  | Volts AC  |
| Frequency Range                 | 47 – 63, 400 with only 115Vac input  | Hertz     |
| Nominal Current                 | 26 @ 120V  | Amps AC   |
| Power Factor (typical)          | >0.98  |           |
| Leakage Current                 | <3   | mAmps AC  |
| Efficiency (typical)            | >80 @ 120VAC (Input to Output)   | %         |
| <b>DC Input</b>                 |  |           |
| Rating                          | 20 -36   | Volts DC  |
| Current                         | 105, full load, 28Vdc input  | Amps DC   |
| Efficiency (typical)            | >85 @ 28Vdc input  | %         |
| <b>Remote On/Off</b>            |  |           |
| Control                         | Dry Contact, normally open, remote switch closure disables power supply output |           |
| <b>Front Panel Indicators</b>   |  |           |
| AC Input Powered On             | Green=Powered on, using AC input, Off=Not powered from AC input                |           |
| DC Input Powered On             | Green=Powered on, using DC input, Off=Not powered from DC input                |           |
| <b>Front Panel Control</b>      |  |           |
| AC Input On/Off Circuit Breaker | UP (ON) powers on unit from AC input, DOWN (OFF) powers off unit from AC input |           |
| DC Input On/Off Circuit Breaker | UP (ON) powers on unit from DC input, DOWN (OFF) powers off unit from DC input |           |
| <b>Rear Connectors</b>          |  |           |
| DC Output                       | 1 x GTS02R22-22S, Pin A&B = +Vout, Pin C&D = -Vout                             | J4        |
| AC Input                        | 1 x GTS02R20-19P, Pin A=Line, Pin B=Ground, Pin C=Neutral                      | J1        |
| DC Input                        | 1 x GTS02R32-17P, Pin A&B = +Vin, Pin C&D = -Vin                               | J2        |
| Remote On/Off                   | 1 x MS3122E12-3S, Pin A = +RC, Pin B = No Connection, Pin C = -RC              | J5        |
| Safety Ground Stud              | ¼ -20 Stud   |           |

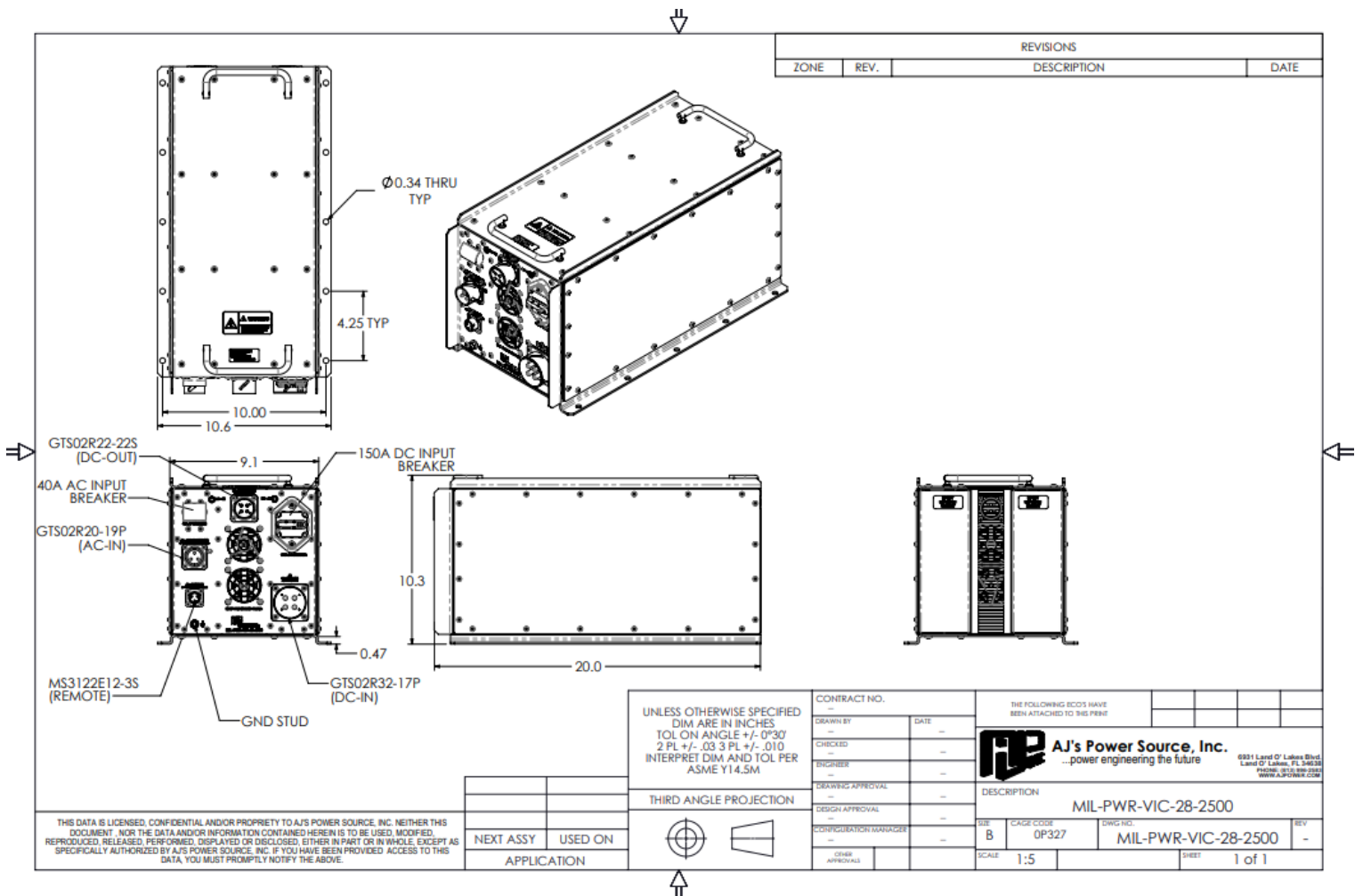
| SPECIFICATION               | VALUE  | UNITS     |
|-----------------------------|--|-----------|
| <b>Protection</b>           |  |           |
| Over Current                | Yes  |           |
| Over Voltage                | Yes  |           |
| DC Input Reverse Polarity   | Yes  |           |
| <b>Isolation</b>            |  |           |
| AC Input to DC Output       | Yes, 1 minute AC input to DC output                                | 3,000 Vdc |
| DC Input to DC Output       | Yes, 1 minute DC input to DC output                                | 1,500 Vdc |
| <b>Environmental</b>        |  |           |
| Operating Temperature Range | -20 to +70*  | °C        |
| Storage Temperature Range   | -40 to +85*  | °C        |
| Working Humidity            | 95 non-condensing*   | %         |
| Altitude                    | 10,000 (Operating) / 40,000 (Non-Operating)*                       | feet      |
| Fungus                      | MIL-STD-810G*, non fungus promoting materials used                 |           |
| Sand and Dust               | MIL-STD-810G*  |           |
| Vibration                   | MIL-STD-810G*  |           |
| Functional Shock            | MIL-STD-810G*  |           |
| Ingress Protection          | IP66*  |           |
| <b>EMI/EMC</b>              |  |           |
|                             | MIL-STD-461F*  |           |
|                             | CE102*   |           |
|                             | CS101*   |           |
|                             | CS114*   |           |
|                             | CS115*   |           |
|                             | CS116*   |           |
|                             | RE102*   |           |
|                             | RS103*   |           |
|                             | <b>*Designed to meet, lab testing required for formal approval</b> |           |
| <b>Physical Properties</b>  |  |           |
| Dimensions                  | 10.3H x 10.6W x 20L (see drawing below)                            | inch      |
| Mounting                    | Bottom Mount   |           |
| Weight                      | ~48  | lbs.      |
| Material                    | Aluminum   |           |
| Color/Finish                | Tan/Sand   |           |



**Front View**  
**MIL-PWR-VIC-28-2500**



**Rear View**  
**MIL-PWR-VIC-28-2500**



**Mechanical Drawing  
 MIL-PWR-VIC-28-2500**