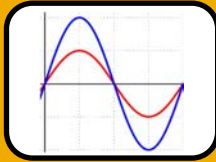


P600 FLEX-POWER

PRIMAX
TECHNOLOGIES



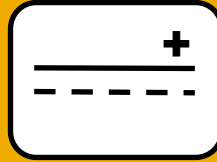
Feather weight



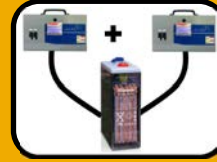
Clean power
<5% THD

Lead acid
Ni-Cd
VRLA
Li-Ion

All types of
batteries



Virtual pure DC



Easy redundancy



Accessories



OVERVIEW

The portable P600 is a compact battery charger, having low ripple and THD for clean power efficient battery recharge and sensitive equipment. It's user friendly menu with its ergonomic and lightweight design makes it easy to carry for service calls where a temporary charger is needed. This charger can provide up to 35A at 125Vdc and 65A at 24Vdc or 48Vdc perfect for substation needs. It can also be used for permanent installations or to rehaul outdated chargers without much disturbing your actual infrastructure.

Features

- ◆ 35A@125Vdc, 65A@48Vdc or 65A@24Vdc when powered by 208-240Vac-1ph-50/60Hz
- ◆ 17A@125Vdc, 50A@48Vdc or 50A@24Vdc when powered by 120Vac-1ph-50/60Hz
- ◆ 7 basic alarms with common form C contacts (dry contacts)
- ◆ Easy access LCD for float-equalize-alarm reset and other operation functions
- ◆ Wall mount key holes for permanent installation

IDEAL FOR:

SERVICE - TEMPORARY REPLACEMENT - LIMITED SPACE - REFURBISHING

Basic design features

Electrical:

- Input Voltage: 120*-208-230-240, 1 phase, 50-60Hz
- Output Voltages: 24-48-125-250-380-480 Vdc
- THD < 5%, Power factor: 0.99, Efficiency: 92%
- Static load regulation: $\pm 0.5\%$ at +10/-12% input voltage, $\pm 5\%$ frequency and 0-100% load
- Dynamic load regulation: $\leq 1\%$ from 10-90% on resistive load
- Output ripple: Less than 100mV at 136Vdc and 30mV at 27Vdc and 56Vdc.
- Protection: Soft start, Current limit adjustable from 5% to 100% of nominal rating, AC and DC output breaker
 - Surge suppression on input and output

Functions & alarms:

Float and automatic/manual Equalize c/w timer
 Alarms: high volts, low volts (2 levels), ac fail, rectifier fail, +/- ground leakage**, equalize.
 Alarms: log, adjustable levels and delays, latched/unlatched

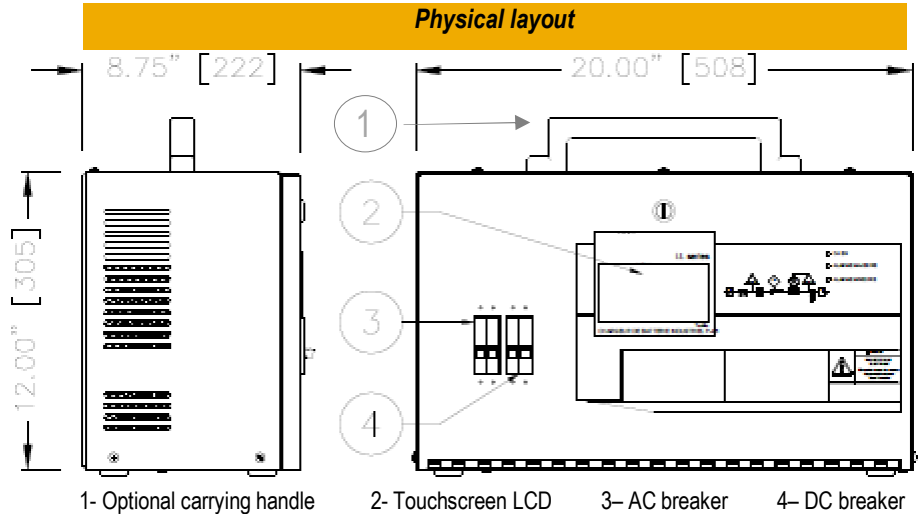
Mechanical and environmental:

- Enclosure: ANSI 61 grey, NEMA 1/IP20 Protection c/w hinged front access door
- Wall mounting key holes on the back of the enclosure
- Weight: 16.5Kg - 36lbs
- Ventilation: variable forced cooling for longer fan life
- Operating temperature: -20°C to +50°C





Safety certification

- UL1012-CSA C22.2-107.1 listed
- CSA C22.2 107.1 certified
- ISO9001-2015 Quality control

Back view: wall mounting key holes



Options

<p>NEMA TT-30R Receptacle for non-permanent 115/250Vac connection</p> 	<p>Battery SB connector for non-permanent dc connection</p> 	<p>Carrying handle and rubber pads for easy handling</p> 
<p>Battery temperature probe for voltage compensation</p> 	<p>Metering & Monitoring</p> <ul style="list-style-type: none"> • System Clock w/ date and time stamp on event log • 2nd temperature probe for room temperature allowing Δ temp. alarm 	<p>Alarms</p> <ul style="list-style-type: none"> • Individual Alarm relays • Battery discharging alarm • Battery temperature compensation • Battery high & low temperature alarm and shutdown

Also see our P600 in Hot-Swap, low power and high power EZ-Swap formats



For other specs please refer to the P600EZ-Swap pamphlet

*: output current is de-rated

** : disabled for grounded models ex. -48Vdc

All specs may change without prior notice

Primax Technologies Inc.

65 Hymus, Pointe Claire, Quebec, Canada, H9R-1E2

Tel: ++514-459-9990

Toll free: 1-866-2Primax

Fax: ++514-459-9991

email: sales@primaxpower.com

Web: www.primaxpower.com